



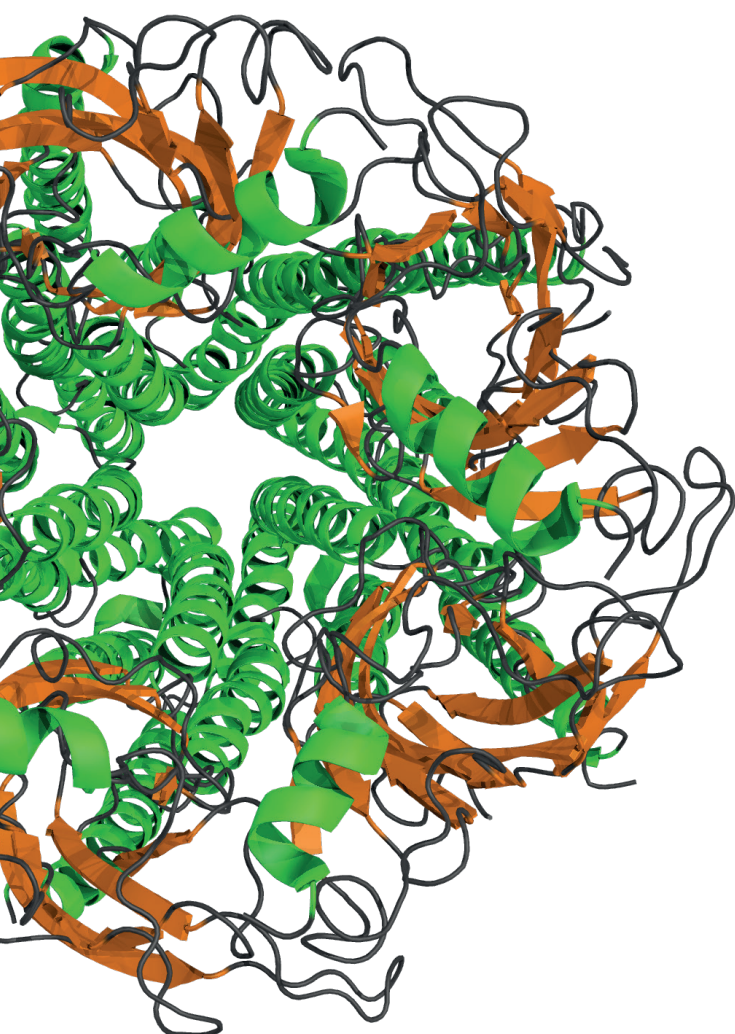
You are cordially invited to

SYLICA LECTURE

17/01/2014

⏏ Friday, from 11.00

seminar room A3/117
University Campus Bohunice



Delivered by

Prof. Gerard J. KLEYWEGT

Protein Data Bank in Europe (PDBe), EMBL-EBI

PDBe - Bringing Structure to Biology

In 2011, the Protein Data Bank (PDB) celebrated its 40th anniversary. To date, the PDB has essentially been a historic archive capturing structures (and the underpinning experimental data) of biomacromolecules described in the primary literature. As the use of structural data by non-experts becomes commonplace, the demands on the archive (by both these users and funding agencies) and the way it is made accessible will inevitably change. It is therefore necessary to transform sites that serve the archive into resources that are directly relevant for scientists who work in biomedicine and related disciplines, while simultaneously taking care not to alienate the communities that produce the structures. EMBL-EBI's Protein Data Bank in Europe (PDBe; pdbe.org), one of the founders of the Worldwide Protein Data Bank (wwpdb.org), is committed to becoming such a resource. PDBe focuses on five areas: advanced services, ligands, integration with other archives and resources, validation, and experimental data. Some of our recent and current work in these areas, as well as plans for the future will be discussed. In addition, on-going developments at wwPDB and future challenges for the archiving of 3D cellular and molecular structure data will be sketched.

Hosted by

Prof. Jaroslav KOČA

Director of CEITEC MU | jkoca@ceitec.cz